



ST. FRANCIS
DE SALES
CATHOLIC SCHOOL

**Parent/Student Handbook
2022-2023**

**500 Camden Avenue • Salisbury, MD 21801 • 410-749-9907
<http://www.stfrancisdesales.net>**

Accredited by Middle States Association Commissions on Elementary and Secondary Schools

FACULTY/STAFF E-MAIL ADDRESSES

NAME	ASSIGNMENT	E-MAIL ADDRESS
Debra Traum	Principal	dtraum@sfdscs.org
Casey Flanagan	Pre-Kindergarten 3's	cflanagan@sfdscs.org
Ronna Bievenour	Pre-Kindergarten 4's	rbievenour@sfdscs.org
Kathleen Hall	Kindergarten	khall@sfdscs.org
Laura Perry	Grade 1	lperry@sfdscs.org
Karly Pizza	Grade 2	kpizza@sfdscs.org
Patricia Bowers	Grade 3	pbowers@sfdscs.org
Susan Lagueux	Grade 4	slagueux@sfdscs.org
Patricia Holmes	Grade 5	pholmes@sfdscs.org
John Duick	Grade 6/ Gr. 6-8 Math/Gr. 6 Religion	jduick@sfdscs.org
Jennifer Kirchner	Grade 7/ Gr. 6-8 Science /Gr. 7 Religion	jkirchner@sfdscs.org
Paula Lattanzi	Grade 8/ Gr. 6 Language Arts/Gr. 8 Religion	plattanzi@sfdscs.org
Megan Duick	Math - Grades 6 - 8	mduick@sfdscs.org
Lisa Adams	Music - Grades K-8 & Choir/Band	ladams@sfdscs.org
Jordan Suber	Art - Grades K-8	jsuber@sfdscs.org
Maylin Linton	Spanish Grades K-8	mlinton@sfdscs.org
Katie Ayd	P.E. /Athletic Director	kayd@sfdscs.org
Gen Chamberlain	Academic Resource Teacher	gchamberlain@sfdscs.org
Christine Chamberlain	Reading Specialist Gr. 1-3	cchamberlain@sfdscs.org
Pam Ward	Grade 7&8 Language Arts/Reading	pward@sfdscs.org
Emily Gutierrez	Pre-K4 Educational Assistant/Library	egutierrez@sfdscs.org
Meg Havens	Pre-K3 Educational Assistant	mhavens@sfdscs.org
Cindy Janaskie	Kindergarten Educational Assistant	cjanaskie@sfdscs.org
Irene Cook	Grades 1 & 2 Educational Assistant	icook@sfdscs.org
Theresa Gabbard	School Counselor	tgabbard@sfdscs.org
Karen Eutsler	Nurse	keutsler@sfdscs.org
Sandra Turner	Nurse	sturner@sfdscs.org
Sarah Passarell	Advancement Director/Website Coordinator	spassarell@sfdscs.org
Laurel DiPirro	Office Manager/Secretary	ldipirro@sfdscs.org
Jane Whittaker	Aftercare Director	jwhittaker@sfdscs.org
Phil Schrider	Maintenance	pschrider@visitstfrancis.net

For school use only. Please do not use these addresses for business/e-mailing list purposes.



ST. FRANCIS de SALES
CATHOLIC SCHOOL

Dear Parents and Students,

Welcome to St. Francis de Sales Catholic School! In choosing to be a part of this community you have demonstrated a belief in the values and philosophy of a Catholic education. When parents choose this gift, it reflects a strong commitment to their child's development and future. We understand and accept our part in the process. We strive to integrate academic rigor and Christ-like patterns of living that will enable each child to meet the demands of our modern society, both at high levels of education and in choosing life-long careers.

The Parent/Student Handbook contains the policies and procedures of St. Francis de Sales Catholic School. We appreciate your understanding of the need to have regulations in place for success of the students attending our school. These Policies enable us to have a professional and defined Catholic institution where students can learn and grow. We hope that this is part of the reason why you have chosen to be a part of the St. Francis de Sales Catholic School community. The school may change any of its policies and procedures and apply them as circumstances dictate. Students and parents must accept and abide by the school's policies and procedures in order for the student to attend the school.

Enrolling your child at St. Francis de Sales School includes the personal responsibility to read, understand, and follow the policies contained in this Handbook. Parents accept the responsibility to follow all school regulations and to direct their children to do the same. In working more closely with us, you will be able to see the effort and interest each teacher puts into her/his duties, continually working to form, enrich, guide, and prepare each child on their individual educational journey. It is important that we have your support and encouragement in working to reach these mutual goals. The faculty and staff of St. Francis de Sales Catholic School look forward to working with you to promote academic excellence and spiritual development in the context of the teachings of the Catholic Church.

May God Continue to Bless You,

Mrs. Debra Traum
Principal

500 Camden Avenue
Salisbury, MD 21801
Phone 410-749-9907
www.stfrancisdесаles.net

PARENT/STUDENT HANDBOOK 2022-2023

Foundational Documents

MISSION STATEMENT

St. Francis de Sales Catholic School is dedicated to educating students of all faiths in a Catholic, Christ-centered environment through faith formation, rigorous academics, and service to others throughout our community.

BELIEF STATEMENT

We believe that St. Francis de Sales Catholic School is a rigorous and nurturing educational community that provides students in Pre-Kindergarten 3 through Eighth Grade, an environment centered in faith formation and service to others throughout our community. We recognize the value and dignity of individuals living out Catholic values, while fostering their own gifts and talents.

PROFILE OF A GRADUATE

A St. Francis de Sales graduate models Jesus in thoughts, words, and deeds while:

- Demonstrating **scholarship** through academic integrity, creative thinking, problem-solving skills, and effective communication and study habits while aspiring to higher education and career readiness.
- Demonstrating **faith** through the Gospel values of love, forgiveness, honesty, and compassion by integrating the tenants of our beliefs into all facets of living.
- Demonstrating **dignity** by recognizing God in others while acting with kindness, courage, and peace.
- Demonstrating **service** by showing mercy, empathy, and justice through service to others in our community.

GOVERNANCE

We are a Catholic school affiliated with the Catholic schools in the Diocese of Wilmington. The pastor is the spiritual leader of the parish and is responsible for the various ministries of the parish, including the ministry of education. The Bishop of the Diocese of Wilmington delegates to the pastor the responsibility of supporting and maintaining the school and providing for the spiritual needs of the school community. With his associates, the pastor takes an active role in the religious and moral development of the students, and in the support and development of the spiritual lives of the students, the administration and faculty, and the parents.

The Principal is the spiritual leader of the school, and is responsible for its daily Catholic Identity. The principal supervises the instructional delivery of the Diocesan curriculum.

We are guided by a Board of Specified Jurisdiction. This group helps lead the school through the work of five committees. These are finance, membership, facilities, development and enrollment. The Pastor is a member of this board. The principal is a non-voting member.

HOME AND SCHOOL ASSOCIATION

All parents are members of the Home and School Association upon registration of their children and payment of annual dues. Families are encouraged to participate in all activities of the H.S.A. and attend scheduled functions and/or meetings.

The objectives of this organization are as follows:

1. To provide a structure within which the school community can assist the administration in creating a Christian environment that fosters the moral, educational, and physical growth of students.
2. To promote the active participation by parents in all aspects of their children's education and welfare.
3. To secure resources for auxiliary programming, services and materials that enrich the educational experience of the children.
4. To provide a forum for discussion and expression of specific needs of the school.
5. To foster communication between the school, teachers and parents.

ADMISSION POLICY AS ESTABLISHED BY THE DIOCESE OF WILMINGTON

Children are admitted to school for Pre-Kindergarten 3 if they are 3 years of age or older before September 1, Pre-Kindergarten 4 if they are 4 years of age or older before September 1 and Kindergarten if they are 5 years of age before September 1. Students for grade 1 must be 6 years of age before September 1 and have successfully completed Kindergarten.

An original birth certificate is required along with a certificate of baptism for Catholics not baptized in St. Francis de Sales Parish. A health certificate containing current immunization information is required along with the social security number of the student. All registrations must be made in person with original certificates. An assessment is given to all new students before acceptance is finalized. School records must be received before final acceptance. Admission is determined on a year by year basis with priority given to active parishioners of St. Francis de Sales Parish. Any student/family who requests a transfer to another school may be asked to complete an exit interview and/or survey. All financial obligations are to be paid before a student's records can be released from St. Francis de Sales.

IMMUNIZATION POLICY

As a school in the Diocese of Wilmington, we do not accept any waivers for religious reasons for immunizations that are required by the State of Maryland. All students must have all of these immunizations up to date and provide documentation to the school nurse. There may be rare exceptions to immunizations due to medical complications. These would have to be documented by a physician and shared with the school nurse.

NON-DISCRIMINATION POLICY

Saint Francis de Sales Catholic School does not discriminate against applicants or students on the basis of race, color, gender, religious, national and ethnic origin as well as sexual orientation.

ASBESTOS INSPECTION

In accordance with the Asbestos Hazard Emergency Response Act, the Management Plan for Asbestos-Containing Materials is available for your inspection at the school office.

RELIGIOUS PRACTICES AND WORSHIP

The development of each child's faith life is fostered through times of prayer, participation in religious celebrations, liturgy, services and the study of Scriptures, thereby providing a Christian foundation and climate of faith in which to mature. Non-Catholic students participate in all religious activities and classes, except the Sacramental Life of the parish.

Sacramental preparation occurs through religion classes and the parish program. To be a part of the sacramental programs of First Eucharist, First Reconciliation and Confirmation, a student must have completed one year of religion classes either in school or with the parish prior to the year of sacramental preparation. Children in second grade will be prepared to receive the Sacraments of Reconciliation and Eucharist. Confirmation is celebrated at the end of eighth grade.

Saint Francis de Sales School exists as a vital part of the worshipping community of Saint Francis de Sales Parish. Our Catholic students' presence at Mass on Sundays manifests their faith life and the commitment of the school to witness the sacramental life of the Church by participating in the celebration of the Eucharist. Our community advocates and expects that our school parishioners will be supportive and active in parish life and will attend Mass weekly.

SCHOOL PROCEDURES and EXPECTATIONS

Arrival Time

- Students should arrive at **8:00 am**. Note that students who arrive before 7:50 am who are not signed up for before school care must have parental supervision.
- Teachers will bring students inside the building at 8:05 am.
- Students who enter the school building **after 8:10 am are tardy**.

Dismissal Time

- Dismissal for all students is 2:55 pm.

Traffic procedures for arrival and dismissal

*Arrival/Dismissal is different for Prekindergarten 3 and 4 as well as kindergarten. Families with students in these classes will park in the church parking lot and walk to and from the school with their child(ren). Older students in the family will walk on the sidewalk along the playground to be with their classes.

- **Arriving to School in the morning**

“Kiss & Go” Traffic: For those families that pull in, drop off children and leave.

1. Enter the Church lot from Riverside Drive.
2. Pull forward toward Camden Ave. past the Carriage House in a **single lane ONLY**.
3. Stop and deposit precious cargo.
4. Proceed in the lane to the exit on Camden Ave. ***RIGHT TURN ONLY ONTO CAMDEN.***

“Park & Walk” Traffic: For those families who park and walk their children in.

1. Enter the Church lot from Riverside Drive.
2. Park in the direction of the Carriage House in an available space.
3. You may walk your child to the appropriate class line for grades 1-8 or to the Parish Center for PreK 3, 4 and kindergarten.
4. Once in your vehicle, pull forward only. **AVOID BACKING UP FOR ANY REASON.**
5. Exit the Riverside Dr. exit. ***RIGHT TURN ONLY ONTO RIVERSIDE***

- **Dismissal from School in the afternoon**

“Pick Up & Go” Traffic: Children in grades 1-8

1. Cars will be formed in one line. Teachers will determine how far back in the line the cars are to be loaded. You may not circumvent the staff member’s decision.
2. Once the line of cars has been loaded, they will leave as directed by the faculty to exit turning right on Camden Ave.
3. The next group of cars will be directed forward by the staff member.
4. This procedure will continue until all cars have been loaded.

“Park & Walk” Traffic: For PreK 3,4 and kindergarten and those families that might need to park and walk to the dismissal area or who have children participating in an after school extracurricular activity, making up school work or playing on the grounds past 3:20 PM.

1. Enter the church lot.
2. Park in the church parking lot and walk to your child’s teacher. Escort your student to the car.
3. Leave the church lot onto Riverside Drive turning right only.

REMINDERS

- ALL TRAFFIC MUST PULL FORWARD! PLEASE, NO BACKING UP.
- The gates close at 8:30 AM.
- PLEASE DRIVE SLOWLY AT ALL TIMES.
- No parking along the field.
- Always watch out for children!
- Do not talk on cell phones while driving! It’s the law in Maryland.
- **Please be mindful of moving traffic in the parking lot. You must accompany (not send) your child(ren) to the car. (Drivers of moving cars do not always see darting children.)**
- Children should know where they will be picked up each day. This is especially important at times of inclement weather.
- Children not picked up by 3:15 pm will be sent to the office. Please notify the office if you will be late. If you know that you will not be able to pick up on time each day, then you will need to enroll your child in aftercare.
- Parents of students who walk or bike to and from school will need to notify the office in writing.

ATTENDANCE

Illness may result in absence from school. Students **must stay home for 24 hours without fever, diarrhea or vomiting;** or following the first dose of a prescribed antibiotic in accordance with **Maryland State** regulations. All contagious illnesses must be reported as soon as diagnosed to the school nurse.

Excessive absences not related to a health problem during any one trimester or during the school year may hinder advancement to the next grade the following year. More than **20 days** absent per year is considered excessive and may affect a student's academic standing and grade promotion.

Please note that a child who arrives after 9:30 AM is considered absent for the first half of the day. A parent is expected to call or email the office any time before 9:30 AM on the day of the absence to report the absence of their child. An email or note is expected upon the child's return to school with the following information: Child's Name, Grade, Date of Absence, Reason, and Signature by a Parent or Guardian. If any student is absent for three or more consecutive days, a doctor's note is expected to be presented to the office. Please note that Power School does not distinguish between excused and non-excused absences. Medical notes regarding absence are kept in the office.

When a student in grades 6-8 has been absent from school for any reason, it is her/his responsibility to personally check with the teacher(s) to determine the work that has been missed during her/his absence and how to make-up work. Parents of younger students will need to contact the teacher via email. All students will have the number of days they are absent with which to complete missing assignments. If an extended absence from school is necessary due to illness, please contact the homeroom teacher to coordinate completion of assignments. Absence from school excludes attendance/participation at ANY extra-curricular activities held that day. Perfect attendance for the year means no days absent or tardy. This includes non-school related early dismissal and being sent home ill.

VACATION ABSENCES

Family vacations should be planned to coincide with one of the ample school holiday periods whenever possible. Students need the continuity of the learning experiences provided through teacher presentations and student interaction. Written work alone cannot substitute for these experiences. If a family chooses to remove a student from school for a vacation, the office and teachers must be notified in writing (or via email) regarding the dates that your child will not be in school. This will result in an unexcused absence. **NO ASSIGNMENT WILL BE GIVEN BEFORE OR DURING VACATION ABSENCES in keeping with Diocesan policy.** Students will make up work upon their return.

EARLY DISMISSAL

Medical appointments should be scheduled outside school hours and on school holidays whenever possible. A written request from the parent or guardian must be submitted to the office on or before the requested day of early dismissal stating the reason for this request. The note should clearly state who is picking up the student. The parent, or approved adult, must go to the office to sign out the student, who will be called to the office for dismissal. Students are responsible for any work missed due to an early dismissal. Students who leave school before 11:30 AM will be marked absent for half the day (afternoon). Students who arrive at school after 9:30 a.m. will be marked absent for half the day (morning).

TARDINESS

Students must be inside school by the 8:10 AM tardy bell. Students who are late must report to the office to obtain an admittance slip to class and to be signed in by a parent. Students should expect to receive a Procedural Referral Detention form and serve a recess detention for each tardy incident that exceeds more than 5 unexcused tardies to school or class in any given trimester. Continued and repeated tardiness may result in afterschool detentions and a meeting with parents. Tardiness affects academic success for the student and is disruptive to the learning environment. Tardiness will also disqualify perfect attendance.

TRUANCY

Maryland State law requires all children between the ages of 5-18 who live in the state to attend school unless excused for medical reasons with a lawful absence.

ACCIDENTS OR ILLNESS AT SCHOOL

It is important for the parent to update the office with phone (cell) number changes. This can be done by the parent in the parent portal of Power School. Emergency numbers for parents and two other people responsible for the child must be kept current. Parents will be notified by phone if a child becomes ill or is injured during an accident that occurs while at school. Should an urgent situation occur, parents are responsible to provide transportation for their child, unless it require emergency services. If a child has a special medical condition, this information must be filed with the nurse.

MEDICATIONS

Students needing medication, both prescription and over-the-counter, while at school must have a statement of permission signed by the doctor and parent. This permission must be updated yearly. A labeled bottle with the student's name and dosage is required and must be signed in by the nurse or the school office. No staff member may issue any medication to any student at any time, if not doctor prescribed. This includes applying sunscreen. Students are **not** permitted to carry medications, including cough drops and over the counter medications. Any surplus student medication that has not been retrieved by that child's parent or guardian by the last day of classes will be disposed of by the nursing staff.

WATER BOTTLES

Students may bring a **clear** water bottle to school. We have water refill stations for students to use throughout the day.

LEAVING SCHOOL CAMPUS

Students are not permitted to leave the school grounds unaccompanied by a parent or teacher during school hours or during after school activities. If leaving campus during school hours, parents must sign out the student from the office prior to leaving. Students are required to remain "in sight" of teachers and supervisors at all times. In addition, students leaving campus at dismissal time are expected to notify school personnel upon departure from that adult's supervision.

EMERGENCY CLOSINGS AND NOTIFICATIONS

In the event of a SFDs school cancellation or other emergency, please stay tuned to WBOC for delays or closure announcements. Moreover, families will be notified by phone using the School Messenger system for any affected school closure or delayed opening via text message. In the event that public schools open late or close early, parental discretion is advised. For example, we generally do not have delays due to fog since we do not have buses and arrive at school after the sun is up.

Please be sure that your emergency contact numbers are current in the parent portal. Some factors for closings or schedule changes will include the condition of roads in and around Wicomico County, parking conditions in and around school, and weather bulletins posted by the National Weather Service. The administration will make every effort to post announcements in a timely manner considering how early our school day begins.

SNOW DAYS

It is the policy of the Diocese of Wilmington that snow days are not made up at the end of the school year. Rather, we offer “snow work” to make up for this missed time. Teachers will either create a “blizzard bag” with written work or may choose a virtual school day. This is dependent on the developmental age of the students and the timing of a storm. Students have one week to complete this work after the return to school.

DRESS CODE (See school website for photos.)

School uniforms must be purchased through Lands’ end or school Used uniform SWAP. All students must be in the complete required school uniform unless otherwise designated by the school administration.

PRE-KINDERGARTEN 3, 4 AND KINDERGARTEN

BOYS AND GIRLS

FALL AND SPRING

T-shirt, grey with logo screen printed
Shorts, maroon
Socks, white crew
Sneakers-Please avoid light up feature

BOYS AND GIRLS

WINTER (NOVEMBER 1ST-APRIL 3RD)

T-shirt, grey with logo screen printed
Sweatpants, maroon
Socks, white crew
Sweatshirt, maroon with logo screen printed
(shorts may be worn UNDER sweatpants in case of indoor PE)
Sneakers-Please avoid “light up” feature

GRADES 1-5

BOYS

Fall and Spring

Grey Shorts and Black Belt
Maroon Golf Shirt, logo
Solid Black Dress Socks (no logos)
Shoes, sturdy black dress

GIRLS

Fall and Spring

Gray Shorts and Black Belt or Grey Skort
Maroon Golf Shirt, logo
Socks, maroon knee highs
Shoes, white saddle or sturdy black dress

November 1st-April 3rd

Grey Pants and Black Belt
White Dress Shirt (short or long sleeve)
Maroon Sweater vest or cardigan w/logo
Tie, maroon
Socks, black, dress, no logos
Shoes sturdy black dress

November 1st –April 3rd

Maroon Plaid School Jumper
White Blouse (Peter Pan collar, short or long sleeve)
Maroon cardigan with logo (optional)
Socks, maroon knee highs or tights
Shoes, white saddle, or sturdy black dress

GRADES 6 - 8

BOYS

Fall and Spring

Grey Walking Shorts or long Pants
Black Belt
Maroon School Golf Shirt, logo
Black Dress Socks
Shoes(sturdy black dress or Vans
in black tie sneaker with **no stripes**)

GIRLS

Fall and Spring

Grey Walking Shorts or Maroon Plaid Kilt or Skirt
Maroon School Golf Shirt, logo
Maroon Socks or tights
Shoes(white saddle, black dress or Vans/black tie
sneaker **no stripes**)

November – April

Grey Dress Pants and Black Belt
White Oxford Shirt (short or long sleeve)
Maroon tie
Maroon Sweater vest or cardigan with logo
Blazer jacket, black (optional)
Black Dress Socks no logos
Shoes (sturdy black dress
or Vans, grey tie sneaker, **no stripes**)

November - April

Maroon Plaid School Skirt or skort
White Oxford Blouse (short or long sleeve)
Maroon Sweater vest or cardigan with logo
Blazer jacket, black (optional)
Grey pants (optional) for very cold days
Maroon Knee Highs or Tights
Shoes (white saddle, sturdy black dress or Vans, grey tie
sneaker, **no stripes**)

Physical Education uniform all grades PreK 3 and 4 through 8th

All students wear PE uniform to school on their designated day(s) for PE.

Fall and Spring - Boys and Girls

T-shirt, grey with logo screen printed
Shorts, maroon
Socks, white crew
Sneakers-Please avoid light up feature

Winter (November 1st-April 3rd) - Boys and Girls

T-shirt, grey with logo screen printed
Sweatpants, maroon
Sweatshirt, maroon with logo screen printed
(shorts may be worn UNDER sweatpants in case of indoor PE)
Socks, white crew
Sneakers - Please avoid light up feature

Other Dress Code Details:

- **Parents must take responsibility for their student's uniform attire every day.**
- Uniform school shorts, skirts and pants must be worn at the waist. Shorts, skirts, jumpers and kilts should come down **to the knee** and they must **not** be rolled up at the top. Uniform shirts and PE shirts must be worn tucked in at all times.
- Nail polish, false eye lashes, false fingernails and make-up are **not permitted** for any student.
- Girls may wear single stud earrings. (no hoops or dangle earrings) Jewelry is to be limited to one religious necklace and no more than one wrist adornment such as a bracelet or watch. No ankle bracelets may be worn.
- Student hairstyles are to be clean and neat. Fad or extreme hairstyles such as “mulletts” are not permitted for any student. Hair may not be “spiked” with gel. Boys’ hair must be evenly cut and ABOVE the collar and ears. Hair is to be kept off the face for all students. Hair may not be dyed an un-natural hair color.
- **Hair accessories must be white, grey or maroon.** Costume accessories such as headbands with animal ears or horns are not appropriate as they are a distraction to others.
- Body decorations such as tattoos and piercings will not be permitted, except for girls' earrings (small post). Students may not wear hats, bandanas, scarves, or sunglasses indoors.
- Students may not use cologne, perfume or scented lotions, since it may bother others with allergies.
- All articles of clothing should be labeled with the name of the student in order to return it in the event of loss. The school is not responsible for lost, misplaced or misappropriated clothing.
- If attire, accessories, or hair are questionable, the determination will be made by the principal along with the homeroom teacher. Parents will be called to bring the appropriate uniform.

**FAILURE TO WEAR PROPER UNIFORM MAY RESULT IN LOSS OF RECESS THAT DAY.*

N.U.T. DAYS

On certain occasions students are permitted to be out of uniform. On these **NUT** days (**No Uniform** Today) students are encouraged to “dress up”. Students may wear jeans that are not baggy and have **NO holes**. In addition, the following are **NOT permitted**: tank tops, yoga or other tight pants, flip flops, hats, baggy sweat pants, halter tops, bare midriffs or sheer clothing. Shorts, skirts and dresses should touch the knee. Shirts should not contain sayings or pictures that have inappropriate language or advertisements. Nail polish and other make-up is still prohibited on NUT days. The principal and faculty will determine the suitability and therefore violation of any item of clothing worn by a student on a NUT day. For such infractions, the students will call home for appropriate clothing to be brought to change.

BIRTHDAYS

On the day of or nearest to your child's birthday, he/she may have a personal NUT day. If your child has a summer or holiday birthday, he/she will choose the date of their “half-birthday” day to celebrate. **The selected day must be pre-arranged with the child's homeroom teacher.** On days such as Mass/prayer service days, school pictures, field trips and other days requiring uniforms, your child may choose the day before or after to celebrate. NUT day dress code regulations must be followed. The homeroom teacher will inform you as to classroom regulations for birthday snacks. Please be aware that there are students in our school who have severe food allergies. It is important that there is strict avoidance of certain foods in order to prevent life-threatening allergic reactions. Please check with the teacher before providing any snacks to the class. Snacks are expected to be a small or of modest proportion and will be distributed among the birthday student's classmates only. Distribution of birthday invitations in the classroom is permitted only if the entire class is receiving invitations to the celebration. If the entire class is not invited, we ask that you use other methods to distribute the invitations in respect to all.

CARE OF SCHOOL PROPERTY

Reasonable care of the school building, furnishings, books, Chromebooks and other instructional materials is expected at all times. If such items are destroyed, payment must be made for the replacement. Books must be covered at all times. Book bags are to be used by all students to transport to and from school. Destroying school property is subject to disciplinary action. This may include paying for damages.

VISITORS

For the safety of our students, **all visitors**, including parent volunteers at the school, except at the times of public function, **must sign in/out at the school office before going through the school. Parents should not let visitors in the building without permission from staff.**

Parents are to schedule conferences in advance at times convenient for both teachers and parents. Conferences will be scheduled at such times that they do not interrupt or interfere with a teacher's class. Parents may not interrupt teachers during class time since the teachers have the responsibility to supervise the students. Unless mutually agreed upon, dropping by for a conference before school is not appropriate.

USE OF TELEPHONE

We make every effort to keep interruptions of the instructional program to a minimum. Therefore, teachers and students will not be called to the phone during the school day. Messages to students from parents will be taken and delivered by the school administrative assistant. Students are not permitted to use the school phones or their personal cell phones to call home for lunch, homework, changes in dismissal arrangements, etc. unless authorized by staff, faculty or the principal. The best way to contact teachers is via their school email. Teachers email addresses are found on the school website and in the front of this handbook.

SCHOOL COMMUNICATION

The school website **stfrancisdesales.net** includes most information needed by families. Teachers use **Class Tag** to post important information to parent emails in real time. Each Wednesday, information about school events, important dates and happenings, etc., will be emailed as part of the **school newsletter**. Parents are expected to be aware of the information included in this weekly correspondence. When necessary, a hard copy of particular information will be sent through the **YOUNGEST and/or ONLY child** in the family. A school newspaper (**The Busy Beak**) is also published periodically throughout the school year and is mailed home. The School Messenger platform is used to send phone calls, emails or texts to the school community regarding time sensitive announcements Parents have access to their child's gradebook through the parent portal in PowerSchool. All families will receive their access code with which they can set up an account at Back to School Night. These do not change from year to year unless done so by the parent/guardian.

PARENT COMMUNICATION ON SOCIAL MEDIA

If social media posts reference St. Francis de Sales School or the administration, faculty, staff, or students of the school, parents and students are expected to use commentary which is **courteous and productive**. In addition, parents are expected to avoid comments that use social media sites to publish disparaging or harassing remarks about the St. Francis de Sales Catholic School and Church community or any of its members.

We are a Christian community and as such should lift each other up at all times. Parents, students or other family members who choose to post editorial content to websites or other forms of online media must ensure that their submission does not reflect poorly upon the school. Care should always be taken to avoid libelous statements. Parents or students that habitually post negative dialog on social media about our community will be contacted by an agent of the school and may be asked to withdraw their student from the school.

TECHNOLOGY

Cell Phones/Texting

A student may have a cell phone in his/her school backpack, which is to be **kept turned off** while inside either their locker or classroom closet throughout the school day. If a cell phone is seen in use during the school day, no matter what the use (texting, talking, web access), the phone will be confiscated and the administration will contact the parent to come pick up the device. Repeated offenses or violations of the Diocesan **Acceptable Use Policy for Technology** will result in detention, suspension, and/or expulsion. Students may ask a staff member for permission to use their phone before or after school. Cell phones are not to be used during before or after care.

Electronic Devices

We strive to maintain technological relevance in education, in providing the opportunity for students to use these devices in accordance with our **Acceptable Use Policy for Technology**. This opportunity is a privilege that requires extra caution and responsibility both on the part of the students and their parents. Students must obtain permission to bring electronic devices to school and may not access the school's wireless network without approval. Guest speakers or parents having business at the school (activities, board meetings, etc). may use their own cellular service or request a login for the guest Wi-Fi network. St. Francis de Sales Catholic School as well as the Diocese of Wilmington are not responsible for lost, stolen, or damaged personal electronic devices.

Wearable Technology Policy

Wearable technology, such as fitness trackers or Smart Watches, which allow for notifications, such as email alerts, caller ID, text notification, social networking, photo/video capturing, and/or calendar alerts are prohibited. No student may wear any form of wearable technology. There may be medical exceptions from a physician.

Devices that have the capability to connect to a personal technology device (cell phone, tablet, etc.) are never permitted, even if the connecting device is out of reach. Normal analog watches are permitted in all grades and encouraged for the learning of time telling.

Administration shall have the final say in all matters related to wearable technology.

Acceptable Use of Technology Policy:

In an effort to ensure the safety of our students and the security of our school assets, our school along with the Diocese of Wilmington has developed an **Acceptable Use Policy** that is specific and clear. A student who violates any portion of the **Acceptable Use Policy** may immediately lose the privilege to use their electronic devices at school for a length of time commensurate with the nature of the violation.

1. All parents and students in grades 3-8 must sign and follow the Acceptable Use Policy.
2. Electronic devices are to be used only for academic activities assigned of or approved by the teacher.
3. All material on the electronic devices must comply with the spirit and policies of St. Francis de Sales Catholic School.

“ACCEPTABLE USE POLICY AS REQUIRED BY THE DIOCESE OF WILMINGTON

Access to technology is integral to the educational mission and purpose of our institution. These policies address the appropriate use of technology provided by the school and personally owned technological devices. This Technology Agreement is an abbreviation of full policies. For full policies, please refer to the complete version of the Acceptable Use of Technology Policy found on our school website. The responsibilities and expectations we have for our students, include but are not limited to:

- *We expect our students to act responsibly and thoughtfully when using technology;*
- *Students should not expect that what they write or publish online is private. The school reserves the right to monitor and track all behaviors and interactions that take place online or through the use of technology on our property or at our events.*
- *The use of all school-owned technologies including the school network and its Internet connection is limited to educational purposes.*
- *Commercial and recreational use of school technology resources is prohibited.*
- *Recreational use of the school technology is prohibited.*
- *All e-mails sent from school provided accounts are representative of the school.*
- *Connection to wireless Internet by students is prohibited unless otherwise directed/instructed.*
- *Students are responsible for any activity that occurs through their personal account.*
- *Students must respect the privacy of others.*
- *Do not intentionally seek information on, obtain copies of, or modify files, other data, or passwords belonging to others.*
 - *Do not misrepresent or assume the identity of others.*
 - *Do not re-post information that was sent to you privately without the permission of the person who sent you the information.*
 - *Do not post private information about another person.*
 - *Do not post photos or videos of others without prior permission.*
 - *Do not use another person's account. If you have been given an account with special privileges, do not use that account outside of the terms with which you were given access to that account.*
- *Do not voluntarily post private information about yourself online, including your name, your age, your school name, your address, your phone number, or other identifying information.*
- *Our institution prides itself on its reputation for excellence; therefore, you may not use the school's name, logo, mascot or other likeness or representation on a non-school website without express permission from school administration.*
- *Students may not initiate electronic communication with teachers, adult leaders in ministry, or administrators unless authorized to do so.*
- *Personal Technology Devices (PTDs) are for use only during an actual lock down and as instructed by emergency or parish/school personnel.*

- *Never use devices capable of capturing, transmitting, or storing images or recordings to record others without the expressed permission of the person(s) being recorded (including adult leaders and other young people). Such recording devices may never be accessed, turned on or operated in restrooms, sleeping areas, dressing rooms, or other areas where there is a reasonable expectation of privacy. Teachers or school personnel reserve the right to confiscate, collect, and inspect any PTD in accord with written policies.*
- *Social networking websites, profiles, or accounts, may not be accessed through the school's technology at any time. Students may not create social networking pages, accounts, sites, or groups that impersonate or misrepresent any individual. Prudent and appropriate use of any off-campus social media outlet should be done in a manner that is respectful to their standing as a member of the SFdS community. Actions contrary to this practice will be considered by the administration and thus might encounter school sanctions.*
- *Students may not access material that is offensive, profane, or obscene including pornography and hate literature.*
- *Inappropriate communication is prohibited in any public messages, private messages, and material posted online by students.*
- *Students may not utilize any technology to harass, demean, humiliate, intimidate, embarrass, or annoy any individual.*
- *Unless explicit permission is granted by legitimate authority, students are not allowed to bring iPods, MP3 players, CD players, DVD players, or other similar data-accessing devices, or personal video game systems onto school property or to school events.*
- *International websites may only be accessed from school owned technology under the direction of legitimate authority.*
- *All students are expected to maintain academic honesty.*
- *All access to the Internet is filtered and monitored.*

Unless legitimate authority grants explicit permission, students are not allowed to alter, change, modify, repair, or reconfigure settings on school-owned computers. This includes downloading, adding, or installing new programs, software, or hardware.

If you accidentally access inappropriate information or if someone sends you inappropriate information, you should immediately tell a staff member or teacher.

If you witness someone else either deliberately or accidentally access inappropriate information or use technology in a way that violates this policy, you must report the incident as soon as possible.

The school retains the right to suspend service, accounts, and access to data, including student files and any other stored data.

The school is not responsible for any damages students may suffer, including but not limited to, loss of data or interruption of service."

Parents and students are required to read the Acceptable Use Agreement and sign it each year. It is available on the school website for parents and students. It can be printed and signed or can be acknowledged using e-collect in the Parent Portal of Power School.

PHOTOS/VIDEOS OF STUDENTS

Occasionally the school publishes information about school activities or student accomplishments including names, pictures, and/or student work. Permission of parents is required each year regarding the publication of these pictures, activities or accomplishments. This Permission Form is available on our school website and as well, is distributed in the packet at Back to School Night. Parents are requested to indicate their choice by printing the form and sending in or by acknowledging the form using the e-collect feature in Power School Parent Portal. **Forms not submitted or acknowledged will be interpreted as granted permission to the school to post/use photographic images.**

Parents should not post photos of other students to personal social media since permission from those students' parents may not have been granted.

LOST AND FOUND

THE SCHOOL IS NOT RESPONSIBLE FOR ANY ITEMS THAT ARE LOST, MISSING OR MISAPPROPRIATED. FOUND ARTICLES WILL TYPICALLY BE DONATED TWICE A TRIMESTER. ALL CLOTHING AND LUNCH BAGS MUST BE LABELED FOR IDENTIFICATION PURPOSES. LABELED CLOTHING WILL BE RETURNED TO STUDENTS. A LOST AND FOUND BIN SITS IN THE VESTIBULE NEXT TO THE SCHOOL OFFICE.

EMERGENCY PROCEDURES

The safety of the students, faculty, and staff is our top priority. Our parent notification system, School Messenger, allows us to send a timely message via all contact numbers and emails to the parents of **ALL** of our students after an emergency or incident has occurred at school. It is imperative that parents provide the school with their most up to date contact information using the parent portal in Power School or by contacting the school office.

If parents are to pick up their children, they must sign them out and may need to provide proper identification. Other persons listed on the Emergency Form may also sign children out provided they have the proper identification. No child will be released without proper identification if asked.

In accordance with the Maryland State and Diocese of Wilmington regulations, we participate in emergency drills every month. These will include at the very least one fire drill per month and one of each of the following-lockdown, intruder, shelter in place, bomb/evacuation and tornado/severe weather throughout the year. Students are trained to move quickly and quietly to their designated locations. Fire equipment is inspected in accordance with state law requirements. St. Francis de Sales School has developed a comprehensive crisis management plan that is a workable response primarily focused on ensuring the safety, emotional and spiritual well-being of students and staff. This plan focuses on the prevention of problems and provides a positive approach to unforeseen events. We teach students and teachers situational awareness and response.

The faculty and staff have received extensive Active Shooter response training with local county and city first responders. They have also been trained in basic first aid (Epi-pens/AED) by our nurses, and Stop the Bleed and Narcan training from Peninsula Medical Center. Our childcare team, early childhood teachers, assistants, and before/aftercare staff, are all CPR certified per the State of Maryland guidelines.

PARENT RESPONSIBILITIES

Parents are called to develop in their children good habits of behavior as well as demonstrate respect and proper attitudes toward school. To help children, all parents should:

1. Maintain positive communication among students, faculty, staff and administration.
2. Teach and explain to children respect for rules, authority, faculty and staff, the rights of others, and for private and public property.
3. Monitor student academic progress via the Parent Portal as part of our Power School platform.
4. Insist on prompt and regular school attendance and comply with attendance rules and procedures.
5. Communicate with the school nurse about health requirements:
 - a. Immunization Records/Health Inventories
 - b. Current Medications
 - c. Allergy Protocol
 - d. Short and Long Term Illnesses

6. Attend requested parent-teacher conferences.
7. Keep current with activities and assignments via the Wednesday newsletter and teacher communications.
8. Carry out recommendations made in the best interest of the child.
9. Comply with the procedures of the school concerning student conduct and cooperate in carrying out disciplinary action.
10. Model Catholic Christian values with the child.

STUDENT RESPONSIBILITIES

Students are called to positively contribute to the educational and spiritual environment of our school. To accomplish this, all students should:

1. Recognize and respect the authority of the faculty, staff and administration.
2. Work to their fullest potential.
3. Conduct themselves in a Christ-like manner.
4. Accept responsibility for their actions.
5. Respect the rights and property of others.
6. Obey school procedures and regulations.
7. Arrive on time to school and classes daily.
8. Observe the dress code policies.
9. Refrain from damaging and defacing the school property and environment.
10. Model Catholic Christian values.

STUDENT BEHAVIOR / DISCIPLINE

The immediate objective of school discipline is to maintain effective teaching and learning conditions. While positive behavior is reinforced, consequences will be administered when any individual's actions interfere with the right of teachers to teach, students to learn, and all to be safe. In addition to school wide policies, students must adhere to individual classroom procedures and accept consequences when the procedures are not followed. Any faculty, staff or administrator has the authority and responsibility to correct any inappropriate or unacceptable behavior that occurs on campus and during any school sanctioned events. If flagrant violations of school rules take place or repeated indifference to correction is demonstrated, appropriate disciplinary action must be taken.

CONDUCT / PROCEDURAL REFERRALS

A Conduct-Procedural Referral Form is used to communicate violations of school policies and procedures. A referral may be issued by faculty, staff, or administration. The written referral will be accompanied by an email from the teacher or administrator. It must be signed by a parent or guardian and returned the next school day.

Conduct referrals may be administered for:

1. Failure to observe school/class rules
2. Destruction of school property
3. Disrespectful/discourteous/rude behavior to an adult
4. Unacceptable physical contact or striking of another student
5. Multiple or repeated incidents of insubordinate behavior
6. Public displays of affection
7. Academic dishonesty (plagiarism or cheating)
8. Other serious infractions

Procedural referrals may be administered for:

1. Failure to observe school/class rules
2. Running in hallway/classroom

3. Inattentive behavior in class
4. Excessive talking or loud behavior
5. Inappropriate etiquette at school assemblies/liturgies
6. Failure to abide by the *Acceptable Use Policy for Technology*
7. Dress code infractions
8. Other incidents of disruptive or inappropriate behavior

Conduct/Procedural Referrals may merit the assignment of one or more of the following:

1. Teacher conference held with student
2. Student referred to the principal
3. Lunch, recess, or after-school detention
4. Student removed from class
5. Student sent home
6. Student suspended
7. Parent contacted
8. Parent conference requested

DETENTION

An afterschool detention will typically be held until 4:00pm. Failure to attend detention sessions as scheduled may result in the assignment of additional time or suspension. Parents will be notified in writing by way of an office referral and email at least 24 hours before a scheduled afterschool detention is to be served. The detention period may require the student to complete assigned work that might be academic or reflective in nature.

SUSPENSION

Suspension may be given to a student for serious infractions of the school rules. The student will be removed from the classroom for one or more days. During an in-school suspension, the student will be removed from class and supervised by the administrator. During an out-of-school suspension parents provide supervision of the student. Students must complete all assignments given during the suspension period. While suspended, the student is ineligible to attend or participate in any school sponsored activity. In addition, the student is placed on probation until the next Progress Report is distributed.

DISCIPLINARY PROBATION

A student is placed on probation for any serious misconduct. The probationary time period will be determined by the Principal. This designation is assigned to a student who has failed to demonstrate improvement in conduct after warnings or who has been involved in a serious offense against school policy. Probation is both a formal notification to parents that their child may face possible expulsion if further behavioral issues continue to occur, and as well, a trial period in which the student must demonstrate significant improvement in behavior. A violation of probation may result in immediate dismissal by the Principal if circumstances warrant such action.

EXPULSION

Expulsion is a denial of the right to attend school for the remainder of the school year and thereafter. It is warranted when extreme violations of school rules take place, repeated indifference to correction is demonstrated, or the well-being of those within the school community has been jeopardized. This action and the authority to do so lie in the hands of the principal, pastor and the superintendent of Catholic Schools. Parent and student will attend a meeting conducted by the administration before the expulsion is finalized. The following list gives examples of student behavior that violate school policy and may result expulsion whether they occur at school or during school sponsored activities:

- Physical or psychological abuse of others.
- Insolence, disrespect, or insubordination of authority.

- Extortion.
- Arson.
- Grave defacing or destruction of school, church, personal property.
- Habitual disruption of school function.
- Possession of and/or trafficking in alcohol, tobacco, vaping products and illegal drugs, as well as their related paraphernalia.
- Possession of a weapon, or any other dangerous article or look-alike weapon.
- Possession of and/or trafficking in pornographic materials.
- Criminal activity.
- Conduct unbecoming a student of a Catholic school.

HARASSMENT & BULLYING BEHAVIOR

As a member of the Body of Christ and part of the community of St. Francis de Sales Catholic School, each person has a right to be treated with respect and dignity. We are committed to each student's success in learning within a caring, responsive, and safe environment that is free of harassment, discrimination, violence, and bullying. Our school works to ensure that all students have the opportunity and support to develop to their fullest potential and share a meaningful bond with people in the school community. Each student in our community has a right to:

- Learn in a safe place
- Be treated with respect
- Receive the help and support of caring adults

Bullying behaviors (physical, emotional and sexual) will not be tolerated in our Christ-centered environment. Some, but not all, examples of this behavior are the following: a repeated pattern of name calling, put downs, starting or spreading rumors, lying about another person, physical threats, intimidation, insults, negative gestures, facial expressions, writing/drawing unkind notes or pictures, and social media harassment that influences the climate of our school community. Appropriate disciplinary measures will be taken for violations of this policy. This will include conferencing with administration.

ACADEMICS

Saint Francis de Sales Catholic School is committed as part of its mission to providing the best possible education for its students. Realizing that each child is an individual and has a tremendous potential for achievement, the curriculum meets the needs of the student according to the standards of the Maryland Department of Education and within the guidelines set forth by the Catholic Schools Office of the Diocese of Wilmington. Students receive instruction in religion, mathematics, language arts (reading/literature, English/grammar, spelling/vocabulary, penmanship, written expression), science, social studies, and Spanish. We also offer classes in art, technology, library, music and physical education for most grade levels.

PROGRESS REPORTS

Progress reports are emailed to the parent/guardian at the end of each trimester for grades PreK3-8 and are an indication of a student's achievement in various academic areas along with their effort and conduct. Formal parent/teacher conferences are held at the interim of the first and second trimesters. Individual conferences may always be made with specific teachers throughout the year. All financial obligations must be current in order to receive progress reports.

Grades K-2 and Specials:

Progress Codes	
P	Demonstrates Proficiency
G	Very Good Progress
S	Satisfactory
I	Improvement Needed
N	Not Yet Demonstrating
NA	Not Applicable

Grades 3-8:

Grade	Percent Range
A	93-100
B	85-92
C	77-84
D	70-76
F	69 and below

Effort/Conduct:

O-Outstanding; **G**-Very Good; **S**-Satisfactory; **I**-Improvement Needed; **U**-Unsatisfactory

ACADEMIC DISTINCTION

The following criteria have been established, in grades 6-8, for students to earn Honor Roll recognition for Academic Excellence and Academic Achievement for each marking term:

Academic Excellence: All A's in major subjects. P's and G's in special subjects. Students must have S or better in Effort and Conduct.

Academic Achievement: A's and no more than four B's in major subjects. P's and G's in special subjects. Students must have S or better in Effort and Conduct.

Major Subjects: Religion, English/Grammar, Reading/Literature, Written Expression, Vocabulary/Spelling, Mathematics, Science, Spanish (8th), and Social Studies.

BENCHMARK TESTING

Students participate in Renaissance Star 360 benchmark assessments three times each year. (September, February and May) These reading and math tests are used to make informed decisions about student instructional needs. Families will receive a parent report with their student's results. Students in kindergarten participate in a STAR Literacy assessment. This test offers insight for reading and math readiness. Students also take these assessments each month for internal progress monitoring.

STUDENT TRANSCRIPTS

Parents have access to review their child(ren)'s records. This request must be made in writing to the principal, and the school will respond to the request within twenty-four hours. In the absence of a court order stating otherwise, a non-custodial parent has access to the academic records and to other school related information regarding the child(ren). If there is a court order specifying that there is to be no information given, it is the responsibility of the custodial parent to provide the school with a copy of the court order. A transfer of student records to another school must be submitted to the school office by the receiving school. Records will be sent only with this official request. All financial obligations to the school must be settled prior to the transfer of such records.

RETENTION

A student is promoted if he/she has successfully achieved the standards for the grade level. As the school year progresses, it may become evident that a student needs to be retained at the current grade level. In such a case, conversations between teachers and parents should be expected to begin during Trimester 2. This decision is not done lightly. Parents are provided specific information about the progress of the child.

Students may be retained in a grade by the school administration in consultation with the teacher and parents if either or both of the following conditions exist:

- The student has not adequately completed the grade work or has a failing average in two major academic subjects.
- The student's maturation is developmentally, socially or emotionally delayed for the next grade level.

If approved by the principal, summer school or tutoring may be accepted in order to remediate these failures. The major subjects are: religion, language arts, mathematics, science, and social studies.

In all cases, grade level retentions are a school decision and must have the approval of the principal.

HOMEWORK GUIDELINES

The school's policy is to assign homework to provide reinforcement of skills or content previously presented in class. Homework should be completed neatly and legibly. If this expectation is not adequately fulfilled, students may be required to redo assignments. Parents should not do their child's homework. Advice and direction are sometimes needed, but the child develops self-confidence and a sense of responsibility when working independently. If a written assignment has not been requested for the night, it is advisable for the student to review her/his work in preparation for the next day's classes. Homework is a review or added practice of a skill already taught in class.

The following is the average expected written homework load for each night - Kindergarten: up to 15 minutes; First Grade: up to 20 minutes; Second Grade: up to 30 minutes; Third Grade: 35 minutes; Fourth Grade: 40 minutes; Fifth Grade: 50 minutes; Sixth through Eighth Grade: 60-80 minutes. The aforementioned average may not include reading or long term project assignments. In addition, these totals are merely an average and may exceed the specified minute total on any given night. In addition to daily written homework assignments, long range projects are also assigned.

All work missed through absences, etc., must be made up at the teacher's discretion. Students will have the number of days absent with which to complete missed work. Tests will typically be announced at least three to five days in advance. Student planners are given to all students in grades K-8 and are utilized in each grade based on the specific teacher guidelines. Students are encouraged to use this organizational tool to record assignments.

STUDENT COUNCIL

The Student Council provides the leadership in promoting the goals and mission of Saint Francis de Sales School. It is responsible for organizing spiritual, educational, and social activities. Student Council is a main channel of communication between students and administration. It is open to students in grades 6-8 who are voted in for membership by fellow students. The Student Council is advisory in nature and all procedures and activities must meet with the approval of the faculty advisor and principal.

NATIONAL JUNIOR HONOR SOCIETY

Student membership in the National Junior Honor Society is based on outstanding Scholarship, Citizenship, Character, Service and Leadership. Students are eligible for membership after the second trimester of 6th, 7th or 8th grade. Students are invited to join the NJHS if they have a cumulative Grade Point Average of 93 or above, Ps or Gs in special subjects, and Os or Gs in Effort and Conduct in all subjects. In addition, students being counseled for academic dishonesty, repeated behavior problems or inappropriate use of technology (as deemed by the *Acceptable Use Policy* of the Diocese of Wilmington) will not be eligible for membership or may lose their membership for violation of these various codes of conduct. Students who are invited to participate complete an application for membership. This application allows the student to demonstrate their strengths in the five characteristics for NJHS. These are scholarship, character, citizenship, leadership and service. The selection of each member to the chapter shall be by a majority vote

of the five-member Faculty Council. A student is expected to maintain his/her cumulative GPA, grades in conduct and effort and service activities throughout his/her membership. Those students who do not continue to meet the qualifications listed above are subject to a probationary period of one trimester in which to correct the deficiency. If the deficiency is not corrected, the member is subject to dismissal.

Student Services

CAFETERIA

Students must either bring a packed lunch from home or purchase lunch from school. The school office will not accept food delivered from a restaurant or other vendor. Of course, when a student has forgotten lunch, a family member may deliver it in person in the morning.

Students may buy lunch on Monday, Wednesday and/or Friday. Lunches are paid through the use of an on-line POS food service system or cash/check payment may be sent in to the school office. Payment must be made in advance, no credit can be extended. Children may also bring lunch from home. Students should not pack sodas or candy for lunch. We need parent volunteers to help serve lunches and clean up each day.

Cafeteria Procedures

1. Students do not leave the classroom before the bell rings. The Grace before Meals prayer is to be said prior to leaving the classroom. Therefore, students may be immediately seated as they enter the lunchroom. All classes are to walk **quietly** to their assigned table. Students who are buying lunch may go directly to the line before going to their place. Grace after Meals is to be led by the teacher on duty before dismissal.
2. Only lunches should be on the tables. (no toys or books etc.)
3. All students should leave their place clean for the next class. Trash is to be put in the waste receptacles and the floor should be cleaned of all debris.
4. Other than use of the restroom facilities, students are not permitted to walk around the cafeteria. Everyone is to stay in her/his seat. Students are to ask permission from the supervising teacher to leave their lunch table.
5. Students should not be excessively noisy.
6. Students will be assigned to help wash tables after lunch.

Recess Procedures

Students are permitted to play in the schoolyard during their recess period. For insurance purposes, there is always a teacher or assistant on duty. **ABSOLUTELY, NO ROUGH GAMES ARE PERMITTED AT ANYTIME.** The teachers/assistants on duty will be present before the first bell and to the end bell. Children who have a minor accident on the playground will be escorted by another student to the Nurses Office. In the case of a serious accident or emergency, teachers will escort the student to the Nurses Office.

The following guidelines are expected:

1. No rough play, such as kicking or hitting another student.
2. No standing on picnic tables or climbing trees.
3. No running or playing on the stairs or the ramp in front of the parish center.
4. No running or playing in the prayer garden or in the flower beds.
5. Students will exhibit sportsmanship in all play.
6. Slides should not be climbed. Only slide down.

BEFORE AND AFTER SCHOOL PROGRAMS

St. Francis' Before/After-School Programs are open for all students. The aftercare program is **not** held the day before the Christmas and Easter holidays, the final day of Catholic Schools Week and the first and last day of school. The program begins on the first full day of classes in September and is held from dismissal time until 5:30 PM. Registration is required and is offered on a first come, first serve basis. While after-school care is provided during noon dismissal days, please note that these early dismissal days may incur an additional fee. Weekly payment is expected using the FACTS program. Payment that is delinquent more than two weeks will likely result in removal from the program.

EXTRA-CURRICULAR ACTIVITIES

St. Francis de Sales School offers several activities in which the students may participate if they meet the academic and physical requirements. Activities are field hockey, basketball, soccer, golf, lacrosse, school newspaper staff, band and choir participation. These activities are extra-curricular and should not interfere with academic progress.

For a well-rounded education, we offer a balance between academic studies and extra-curricular activities so that one has the opportunity to develop intellectually, morally, emotionally, physically and culturally. Parental permission is required for students who participate in these programs. Activities may require a fee.

A student who participates in any school or sport activity must maintain grades of C or above and at least Satisfactory in Conduct and Effort during participation. Students who do not maintain a C or above average may not participate in the activity until issued progress reports (report cards) or show adequate improvement as described by the administration. Students who participate in sports activities must maintain a yearly physical examination by a physician. **Students who are absent from school may not participate in or be present at any activity after school or be present on school property. Students who miss excessive amounts of practice without permission may not be able to participate in games. The principal holds the final decision on any issue relating to this policy.**

COMMUNITY GATHERINGS

Parents are invited and encouraged to attend any community meeting, school assembly, function, Mass/Prayer Service, etc., even if their child is not actively participating. Your presence gives support and, at the same time, helps you keep in touch with the school. Proper audience behavior and etiquette is expected.

FIELD TRIPS

Periodically, students are taken on field trips as a part of their educational program. These trips are considered a privilege, and a student may be denied participation if she/he fails to meet academic or behavioral requirements. When such trips are being planned, permission forms will be sent home to be signed and returned to school. Forms, other than the school form, will not be accepted. **Any student who fails to submit the St. Francis de Sales Permission Form signed by a parent will not be allowed to participate. Telephone calls or a fax are not typically accepted in lieu of the proper form being completed.** No refunds for the cost of the trip are given. A parent has the right to refuse to allow the child to participate in the field trip. If a student will not be participating, they will stay home from school. Siblings may not accompany students and/or parent chaperones on field trips. Any student who does not participate in the field trip will be marked absent. All chaperones must be cleared through a background check by the Diocese in order to accompany the students. (All trips are supervised by the classroom teacher and volunteer parents.) Students must remain for the entire class trip and will be dismissed from school. The school is not liable for any accidents or injury occurring during a class trip. When participating in a field trip, all school rules and sanctions apply. The Diocese of Wilmington does not permit over-night trips.

Tuition and Volunteering

FINANCIAL COMMITMENTS

Tuition covers approximately 75% of the total cost of educating a student at St. Francis de Sales School. Fundraising, tuition assistance and contributions from the parish support the rest of the funds needed. Tuition paid is non-refundable and payments are expected to be current. Monthly payments must be signed up for direct withdrawal using the FACTS program. The only exception is when paying in full with one payment.

Please note that excessive delinquency of a family's financial obligations to the school may result in disenrollment from the school. Failure to complete financial obligations by the end of the school year will prohibit re-enrollment for the following year. It will also prevent parents from receiving student records. Other fees include the annual registration/re-enrollment payment. Additional fees include H.S.A. dues, Before/After School Care Programs, failure to complete volunteer hours, uniforms, team or co-curricular activity, class activities and trips.

A parent who is having unexpected financial difficulties should inform the business manager, Susan Flanagan, immediately in order to make arrangements. All tuition transactions are handled through the Business Office (410-742-6443).

VOLUNTEER COMMITMENT

Since tuition and parish subsidy do not cover the cost of educating each child at St. Francis de Sales School, additional fees are derived from each family's participation in support of various fundraisers. Parents are required to give no less than 30 hours of volunteer service during the school year. There are many opportunities to help at school. This includes helping with lunch/recess, chaperoning dances, field trips, field day, coaching, etc. Volunteer hours are required to be completed by June 30th. Failure to complete the hours of volunteer service by the end of the fiscal year will result in a fee of \$15/hour for uncompleted service hours up to \$450. The recording of hours worked is to be entered by families into the Volunteer Service Program log book in the school office.

SCRIP Program Rewards

St. Francis de Sales Catholic School families earn both volunteer hours and tuition money as a reward for purchase of SCRIP gift cards. This applies to both gift cards and online Raise Right app purchases. The school gives families half of the value of the rebate given by the vendor from this program. For questions please contact the business office at sflanagan@visitsfrancis.org. Here is how the reward program works.

1. The school incurs a \$30 administrative fee to cover mailing, copying and labor expenses. Once a family's SCRIP purchases have covered this fee, they begin to begin to earn rewards.
2. For each \$2,000 in total purchases, families earn 5 volunteer hours for the current school year.
3. Families earn one half of the rebate amount for tuition credit for the **next** school year. For example, after purchases cover the administrative fee, a gift card for Food Lion for \$100.00 yields \$2.50 toward tuition.
4. The profits from SCRIP are directly deposited in the Home and School Association account. These funds are used for programs and resources that directly impact students. These include sports, technology and playground equipment. Support for this endeavor costs nothing extra for families while greatly benefiting our school.

CRIMINAL BACKGROUND CHECK

In accordance with the Diocese of Wilmington's "For the Sake of God's Children" mandate, **ALL** employees and volunteers (including but not limited to coaches, service providers, chaperones, classroom and lunch helpers) must complete a Criminal Background Check and receive clearance. Individuals will

pay \$45 for a code from the office to be used by the vendor. The application is done online and once cleared lasts for 5 years.

LIBRARY BOOKS

Students are responsible for lost or damaged books. All library materials must be returned as required before report cards will be issued. Families are required to pay for or replace lost or damaged books.

PRINCIPAL'S RIGHT TO AMEND

The administration reserves the right to rule on individual issues and retains the right to amend the handbook for just cause. For the most up-to-date version of the Parent-Student Handbook, families are asked to refer to the school website for its most current edition.

(revised 7/15/22)

TRIGLIA
Transportation Co., Inc.
 P.O. Box 218, Delmar, DE 19940

AFFILIATED WITH PRIME CARRIERS

302-846-2141 • FAX 302-846-3785
1-800-648-8744



**The Bank Of
 Delmarva**

Your Bank For Life!

Ten Convenient Locations

Delmar - Salisbury (4) - Laurel - Seaford
 Dagsboro - Ocean City - Rehoboth Beach

Customer Service

Member **FDIC** 410-548-7892 • 800-787-4542
 www.bankofdelmarva.com



Dog-gone-it!



NEAR IT'S
Leos
 est. 1946

VALUE CARPET ONE
 Floor & Home



Carpet Hardwood Vinyl
Luxury Vinyl Plank (Waterproof Floors)
Tile Laminate Cork

OPEN: Monday - Friday, 8am - 6pm / Saturday, 8:30am-2:30pm

1530 N. Salisbury Boulevard • Salisbury, MD

410-742-5224 valuecarpetonesalisbury.com

St. Francis de Sales Catholic School

August 2022

Sunday	Monday	Tuesday	Wednesday	Thursday	Friday	Saturday
	1	2	3	4	5	6
7	8	9	10	11	12	13
14	15	16	17	18 New Teacher Orientation Day	19	20
21	22	23	24 Spirituality Day with the Bishop	25 Shield of Protection PD 9:00 am	26	27
28	29 Faculty/Staff Meeting 9:00 AM New Faculty/St. Francis Orientation 1:00pm	30 Faculty/Staff PD	31 Faculty/Staff PD			

© 2011-2021 by Vertex42.com. Free to Print.

<https://www.vertex42.com/calendars/school-calendar.html>

LAWN & GARDEN EQUIPMENT
SALES • SERVICE • ALL BRANDS

MacMillan
OUTDOOR POWER EQUIPMENT CO., INC.

Looking For
FAST SERVICE
We Keep Most Parts in Stock


- Air Cooled Engines
- Pumps
- Generators
- Chain Saws

Mon-Fri 8am-5pm
Sat 9am-12 Noon
410-742-4810
720 SNOW HILL RD., SALISBURY


St. Francis de Sales Catholic School

September 2022

Sunday	Monday	Tuesday	Wednesday	Thursday	Friday	Saturday
				1 Meet your Teacher 10:00am-12:00pm	2 SCHOOL CLOSED	3
4	5 Labor Day SCHOOL CLOSED	6 First Day of School 12:00 Dismissal No Before/Aftercare	7 Before/Aftercare Begins	8 School Pictures Back to School Night in Parish Center-6:30pm Home/School Assoc. Happy Hour 5:30-6:30	9 School Pictures	10
11	12	13	14 8:30 Mass	15	16 Summer Reading & Math Reward - 2:00pm	17
18 Blessing of Backpacks at Masses	19	20	21 8:30 Mass	22	23	24
25	26	27	28 8:30 Mass	29 Faculty Meeting 3:30	30 H.S.A. Family Social Event 5:00-7:00 pm	
						



Jean Ann Lewis, DMD



pediatric dentistry of salisbury
677 S. Salisbury Blvd.
Salisbury, MD 21801
410-749-0133
www.pediatricdentistryofsalisbury.com



Brian C. McGinty, Principal
Gavin M. McGinty, Agent
Susan McGinty, Agent

- Auto
- Home
- Business
- Life

913-C Snow Hill Road
Salisbury, MD 21804
443-260-3800
CelticInsurance@comcast.net

St. Francis de Sales Catholic School

October 2022

Sunday	Monday	Tuesday	Wednesday	Thursday	Friday	Saturday
						1
2	3	4 Blessing of the Pets 8:30 AM in front of parish offices	5 8:30 Mass	6	7	8
9	10 Columbus Day SCHOOL OPEN	11 H.S.A. Open Meeting 6:30pm	12 8:30 Mass	13 H.S.A. Purse Bingo	14 Interim - T1	15
16	17 H.S.A. Wreath Sale	18	19 8:30 Mass	20 12:00 Dismissal Parent-Teacher Conferences 1-7PM Aftercare Available	21 SCHOOL CLOSED Parent-Teacher Conferences 8-4PM	22
23	24	25	26 8:30 Mass	27	28 Middle School Bonfire Social 7:00-9:00 pm	29 Trunk or Treat 10:00-12:00pm
30	31 Halloween					



GARY MARSHALL
INSURANCE AGENCY

PROUDLY SERVING THE SHORE SINCE 1995
HOME • AUTO • LIFE & MORE!

12610 Somerset Ave.
Princess Anne, Md.

410-651-1111

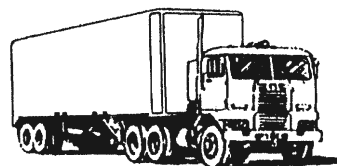
1138 Parsons Rd.
Salisbury, Md.

410-749-2220

www.GaryMarshallAgency.com



Join our Facebook
group of more than
15,000 members



TRIGLIA

Transportation Co., Inc.

P.O. Box 218, Delmar, DE 19940

AFFILIATED WITH PRIME CARRIERS

302-846-2141 • FAX 302-846-3785

1-800-648-8744

St. Francis de Sales Catholic School

November 2022

Sunday	Monday	Tuesday	Wednesday	Thursday	Friday	Saturday
		1 8:30 Mass ALL SAINTS' DAY 1st Day for Winter Uniforms	2	3	4 Last day of wreath sale	5
6	7	8	9 8:30 Mass	10 Faculty Meeting 3:30pm	11 Veterans Day Prayer Service 2:00pm	12 Diocesan High School Placement Test (8th grade) Troop 185 Boy Scout Yard Sale 7-12
13	14	15	16 8:30 Mass	17	18 Bull Roast T.B.A.	19
20	21 SCHOOL CLOSED	22 SCHOOL CLOSED	23 8:30 Mass SCHOOL CLOSED	24 Thanksgiving SCHOOL CLOSED	25 SCHOOL CLOSED	26
	FALL BREAK					
27 First Sunday of Advent	28 SCHOOL REOPENS End - Trimester 1	29	30			

© 2011-2021 by Vertex42.com. Free to Print.

<https://www.vertex42.com/calendars/school-calendar.html>



**FIRST SHORE
FEDERAL**

Salisbury

410-546-1101

106 S. Division Street

410-543-0761

1116 Mt. Hermon Road

www.firstshorefederal.com

**Community
Minded.**
Just like you

Branch Locations

Berlin, Ocean Pines, and

Pocomoke City, MD

Millsboro and Ocean View DE



HOLLOWAY
FUNERAL HOME

Professional Association

Serving the Lower Delmarva Peninsula Since 1883

5th Generation Family Business • Funeral & Cremation Services

Advance Planning • Monuments • Pet Services

410-742-5141 • www.HollowayFH.com

St. Francis de Sales Catholic School

December 2022

Sunday	Monday	Tuesday	Wednesday	Thursday	Friday	Saturday
				1	2	3 Santa Social & Penguin Run
4 Christmas Tea	5	6	7 No Mass	8 8:30 Mass Feast of the Immaculate Conception Faculty Meeting 3:30pm	9	10
11	12	13	14 8:30 Mass	15	16	17
18	19	20 Christmas Pageant 6:30pm	21 8:30 Mass	22 EARLY DISMISSAL NO AFTERCARE	23 SCHOOL CLOSED	24 Christmas Eve
25 Christmas Day	26	27	28	29	30	31





WEISNER
REAL ESTATE, INC.

Property Management
Sales & Rentals



410-742-7141

www.WeisnerRealEstate.com



**For you. For them.
For everyone.**

At Edible, we've got something
for every occasion.

701-C East Naylor Mill Road
Salisbury, MD 21804
410-677-0350

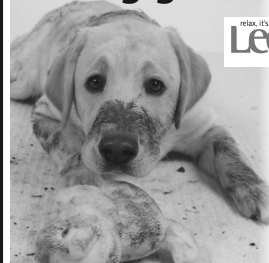


All services shown only. Cannot be combined with any other offer. ©2019 Edible
All rights reserved. Edible is a registered trademark of Edible, LLC. All rights reserved.

Chocolate Dipped
Strawberries



Dog-gone-it!



VALUE CARPET ONE
Floor & Home



Carpet Hardwood Vinyl
Luxury Vinyl Plank (Waterproof Floors)
Tile Laminate Cork

OPEN: Monday - Friday, 8am - 6pm / Saturday, 8:30am-2:30pm
1530 N. Salisbury Boulevard • Salisbury, MD

410-742-5224 valuecarpetonesalisbury.com

St. Francis de Sales Catholic School

January 2023

Sunday	Monday	Tuesday	Wednesday	Thursday	Friday	Saturday
1	2 SCHOOL CLOSED	3 SCHOOL REOPENS	4 8:30 Mass	5	6 Feast of the Epiphany	7
8	9	10 H.S.A. Open Meeting 6:30pm	11 8:30 Mass	12	13	14
15	16 ML King, Jr. Day SCHOOL CLOSED	17	18 8:30 Mass	19	20 H.S.A. Family Social Event 5:00-7:00pm	21
22	23	24	25 8:30 Mass	26	27 Interim - T2	28
29	30	31				
CATHOLIC SCHOOLS WEEK						
						

LAWN & GARDEN EQUIPMENT
SALES • SERVICE • ALL BRANDS

MacMillan
OUTDOOR POWER EQUIPMENT CO., INC.

Looking For
FAST SERVICE
We Keep Most Parts In Stock

- Air Cooled Engines
- Pumps
- Generators
- Chain Saws

Mon-Fri 8am-5pm
Sat 9am-12 Noon

410-742-4810
720 SNOW HILL RD., SALISBURY

WAVE OF PROGRAMS!
Sign Up For
Weekly Classes!

**PRESCHOOL, SCHOOL AGE
& COMPETITIVE GYMNASTICS**
Boys & Girls - Ages 9 months - Adult
Fully Trained Safety Certified Staff - 15,000 SQ. FT. State of the Art Training Facility
400 South Brown Street, Fruitland, MD 21826
410.742.2053
beachbounders@comcast.net

**'Schools
Closed'
Camps!**

**Birthday
Parties!**

**GYMNASTICS
& ATHLETICS**
Fruitland, Maryland

WWW.BEACHBOUNDERS.COM

GM **GARY MARSHALL**
INSURANCE AGENCY

PROUDLY SERVING THE SHORE SINCE 1995
HOME • AUTO • LIFE & MORE!

12610 Somerset Ave. 1138 Parsons Rd.
Princess Anne, Md. Salisbury, Md.
410-651-1111 410-749-2220
www.GaryMarshallAgency.com

**SHOP LOCAL
DELMARVA**

Join our Facebook
group of more than
15,000 members

St. Francis de Sales Catholic School

February 2023

Sunday	Monday	Tuesday	Wednesday	Thursday	Friday	Saturday
			1 8:30 Mass Groundhog Day CATHOLIC SCHOOLS WEEK	2	3 Grandparents' Day events start at 8:30am 12:00 Dismissal No aftercare	4
5	6 Parent/Teacher Conferences as scheduled	7	8 8:30 Mass 12:00 Dismissal Aftercare Available Parent/Teacher Conferences 1:00-6:30pm	9 Parent/Teacher Conferences as scheduled	10	11
12	13	14	15 8:30 Mass	16	17	18 H.S.A. Auction
19	20 Presidents' Day SCHOOL CLOSED	21 Shrove Tuesday	22 8:30 Mass ASH WEDNESDAY	23 Faculty Meeting 3:30pm	24 Stations of the Cross 2:30pm	25
26	27	28				
						



HOLLOWAY
FUNERAL HOME

Professional Association

*Serving the Lower Delmarva Peninsula
Since 1883*

5th Generation Family Business
Funeral & Cremation Services
Advance Planning • Monuments • Pet Services
410-742-5141 • www.HollowayFH.com



Casual Family Dining
Private Banquet Room
Full Bar
Catering
Carryout with
Online Ordering

219 N. Fruitland Blvd. • Fruitland, MD 21826
410-749-6961
www.adamsribsfruitland.com



**The Bank Of
Delmarva**

Your Bank For Life!

Ten Convenient Locations

Delmar - Salisbury (4) - Laurel - Seaford
Dagsboro - Ocean City - Rehoboth Beach

Customer Service

Member **FDIC** 410-548-7892 • 800-787-4542
www.bankofdelmarva.com



WEISNER
REAL ESTATE, INC.

*Property Management
Sales & Rentals*

410-742-7141

www.WeisnerRealEstate.com



St. Francis de Sales Catholic School

March 2023

Sunday	Monday	Tuesday	Wednesday	Thursday	Friday	Saturday
			1 8:30 Mass	2	3 Stations of the Cross 2:30pm End - Trimester 2	4
5	6	7	8 8:30 Mass	9	10 11:15 Stations of the Cross 12:00 Dismissal No aftercare	11 Confirmation 8th Grade 2:00pm
		Middle States Team Visit				
12	13 SCHOOL CLOSED Professional Development Day for Teachers	14 H.S.A. Open Meeting 6:30pm	15 8:30 Mass	16	17 Stations of the Cross 2:30pm	18
19	20	21	22 8:30 Mass	23	24 Stations of the Cross 2:30pm	25
26	27	28	29 8:30 Mass	30	31 7th Grade Live Stations of the Cross 2:15 & 7:00pm	
						

© 2011-2021 by Vertex42.com. Free to Print.

<https://www.vertex42.com/calendars/school-calendar.html>



Dog-gone-it!
Lees
est. 1986

VALUE CARPET ONE
Floor & Home

Carpet Hardwood Vinyl
Luxury Vinyl Plank (Waterproof Floors)
Tile Laminate Cork

OPEN: Monday - Friday, 8am - 6pm / Saturday, 8:30am-2:30pm
1530 N. Salisbury Boulevard • Salisbury, MD

410-742-5224 valuecarpetonesalisbury.com



Come Home and be Worlds Apart...

Yard Designs, Inc.
Bryan LeCompte
410-742-8003
Email b.lecompte@comcast.net

St. Francis de Sales Catholic School

April 2023

Sunday	Monday	Tuesday	Wednesday	Thursday	Friday	Saturday
						1
2 PALM SUNDAY	3 1st day for Spring Uniforms	4	5 8:30 Mass	6 Holy Thursday 12:00 Dismissal No aftercare	7 Good Friday SCHOOL CLOSED	8
9 EASTER	10	11	12	13	14	15
	SCHOOL CLOSED - EASTER VACATION					
16	17 SCHOOL REOPENS	18	19 8:30 Mass	20	21	22
23	24	25	26 8:30 Mass	27 Faculty Meeting 3:30pm	28 Interim - T3	29 H.S.A. Golf Tournament
30						



URGENT CARE CENTER

6 Locations to Better Serve You

WHERE WE CARE FOR YOU

www.YourDocsIn.com
877-222-4934

**For you. For them.
For everyone.**

At Edible, we've got something for every occasion.

701-C East Naylor Mill Road
Salisbury, MD 21804
410-677-0350



At selected stores only. Cannot be combined with any other offer. ©2019 Edible, LLC. Edible, Edible Arrangements, and the Fruit Basket logo are registered trademarks of Edible, LLC. All rights reserved.



Casual Family Dining
Private Banquet Room
Full Bar
Catering
Carryout with Online Ordering

219 N. Fruitland Blvd. • Fruitland, MD 21826
410-749-6961
www.adamsribsfruitland.com

St. Francis de Sales Catholic School

May 2023

Sunday	Monday	Tuesday	Wednesday	Thursday	Friday	Saturday
	1	2	3 8:30 Mass	4	5	6
7	8	9	10 8:30 Mass	11	12	13
14 Mother's Day	15	16	17 8:30 Mass	18 Ascension of the Lord	19	20 Fairytale Tale
21	22	23 Spring Concert 6:30 PM	24 8:30 Mass	25 Faculty Meeting 3:30pm	26	27
28 Pentecost	29 Memorial Day SCHOOL CLOSED	30 	31 8:30 Mass NJHS Induction Ceremony after Mass			

410-546-1557

Fax: 443-665-4152

frank@hvacservicesunlimited.com



HVAC SERVICES UNLIMITED INC.

Heating & Air Conditioning • Installation and Service

FRANK TOBAT

President

PATRICK TOBAT

Vice President

P.O. Box 70 • Nanticoke, MD 21840

www.hvacservicesunlimited.com

Jean Ann Lewis, DMD



pediatric dentistry of salisbury

677 S. Salisbury Blvd.

Salisbury, MD 21801

410-749-0133

www.pediatricdentistryofsalisbury.com

St. Francis de Sales Catholic School

June 2023

Sunday	Monday	Tuesday	Wednesday	Thursday	Friday	Saturday
				1	2 PreK3-2nd gr. Field Day 12:00 Dismissal Aftercare Available 7th&8th gr. Dance	3 H.S.A. Big Ball Tournament
4	5	6	7 8:30 Mass Passing the Torch Ceremony-after Mass	8 8th Grade Fun Day 12:00 Dismissal - 8th gr. Only	9 3-7th gr. Field Day 12:00 Dismissal Aftercare Available	10
11 8th Grade Graduation and Awards Ceremony 2:00pm	12	13	14 Flag Day 8:30 Mass	15 LAST DAY OF SCHOOL -8:30 Prayer Service- 12:00 Dismissal No Aftercare End - Trimester 3	16 Faculty/Staff Report	17
18 Father's Day	19 Faculty/Staff Last Day Faculty Retreat	20	21	22	23	24
25	26	27	28	29	30	

© 2011-2021 by Vertex42.com. Free to Print.

<https://www.vertex42.com/calendars/school-calendar.html>



Celtic
INSURANCE, LLC

- Auto
- Home
- Business
- Life

Brian C. McGinty, Principal
Gavin M. McGinty, Agent
Susan McGinty, Agent

913-C Snow Hill Road
Salisbury, MD 21804
443-260-3800
CelticInsurance@comcast.net



**FIRST SHORE
FEDERAL**

Salisbury

410-546-1101

106 S. Division Street

410-543-0761

1116 Mt. Hermon Road

www.firstshorefederal.com

Community
Minded.
Just like you

Branch Locations

Berlin, Ocean Pines, and

Pocomoke City, MD

Millsboro and Ocean View DE



Member
FDIC

St. Francis de Sales Catholic School

July 2023

Sunday	Monday	Tuesday	Wednesday	Thursday	Friday	Saturday
						1
2	3	4	5	6	7	8
9	10	11	12	13	14	15
16	17	18	19	20	21	22
23	24	25	26	27	28	29
30	31	Important Reminders				



WEISNER
REAL ESTATE, INC.

*Property Management
Sales & Rentals*



410-742-7141



www.WeisnerRealEstate.com

**For you. For them.
For everyone.**

At Edible®, we've got something
for every occasion.

701-C East Naylor Mill Road
Salisbury, MD 21804
410-677-0350

Chocolate Dipped
Strawberries Cone



edible®

edible.com

At selected stores only. Cannot be combined with any other offer. ©2019 Edible IP, LLC. Edible®, Edible Arrangements®, and the Fruit Basket Logo are registered trademarks of Edible IP, LLC. All rights reserved.

\$5 OFF your purchase of \$29 or more

Code: STFRAN22 Expires: 12/31/24

Jean Ann Lewis, DMD



pediatric dentistry of salisbury

677 S. Salisbury Blvd.
Salisbury, MD 21801

410-749-0133

www.pediatricdentistryofsalisbury.com

LAWN & GARDEN EQUIPMENT

SALES • SERVICE • PARTS • ALL BRANDS



- Air Cooled Engines
- Pumps
- Generators
- Chain Saws

MacMillan

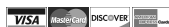
OUTDOOR POWER EQUIPMENT CO., INC.

Looking for **FAST SERVICE**
We Keep Most Parts in Stock

PARTS FOR CHINESE MAKES & MODELS
Scooters • Go-Carts • Dirt Bikes • ATVs



MON-FRI 8am-5pm • SAT 9am-12 Noon • **410-742-4810** • SNOW HILL RD., SALISBURY



"WHERE DIVING IS FUN"

SALES • RENTALS • SERVICE
DIVE VACATIONS • O.C. CHARTER • CERTIFICATION

410-219-3483

720 C Snow Hill Road • Salisbury
Mon-Fri 8-5 • Sat 9-12

PRESCHOOL, SCHOOL AGE & COMPETITIVE GYMNASTICS



GYMNASTICS
& ATHLETICS
Fruitland, Maryland

Boys & Girls -
Ages 9 months - Adult

Fully Trained Safety Certified Staff
15,000 SQ. FT. State of the Art Training Facility
400 South Brown Street, Fruitland, MD 21826

410.742.2053
beachbounders@comcast.net



Birthday Parties!



WWW.BEACHBOUNDERS.COM

We Love Finding
Discounts that
Save you Money



Best Insurance Agent
on the Eastern Shore
David Galeone



GARY MARSHALL
INSURANCE AGENCY

PROUDLY SERVING THE SHORE SINCE 1995
HOME • AUTO • LIFE & MORE!

12610 Somerset Ave.
Princess Anne, Md.
410-651-1111

1138 Parsons Rd.
Salisbury, Md.
410-749-2220

www.GaryMarshallAgency.com



Join our Facebook
group of more than
15,000 members

VALUE  CARPET ONE
Floor & Home



Dog-gone-it!

relax, it's...
Lees[®]
est. 1846

Carpet  Hardwood  Vinyl
Luxury Vinyl Plank (Waterproof Floors)
Tile  Laminate  Cork

OPEN: Monday - Friday, 8am - 6pm
Saturday, 8:30am - 2:30pm

1530 N. Salisbury Boulevard • Salisbury, MD

410-742-5224

valuecarpetonesalisbury.com

*Everyone has a
favorite one.*

*One that changed
their life forever.*

*Someone that
believed in them when
they thought no one else did.*

*One Teacher...with a dedication to
education can affect a positive
change in the whole community.*

Proud to support St Francis deSales.



*Everyone has a
Favorite*

FS **FIRST SHORE
FEDERAL**

Salisbury

410-546-1101

106 S. Division Street

410-543-0761

1116 Mt. Hermon Road

*Community
Minded.*
Just like you

Branch Locations

Berlin, Ocean Pines, and Pocomoke City, MD
Millsboro and Ocean View DE

www.firstshorefederal.com



Member
FDIC



**Celtic Insurance
may be able to save you
up to 30% with:**

Safe Driver Discount	Multi-Car Discounts
Multi-Policy Discounts*	Pay Plan Discount
Life Multi-Policy Discount**	First Accident Forgiveness
Discounts for Safety Features	



Celtic
INSURANCE, LLC

- *Auto*
- *Home*
- *Business*
- *Life*

Brian C. McGinty, Principal
Gavin M. McGinty, Agent
Susan McGinty, Agent

913-C Snow Hill Road
Salisbury, MD 21804
443-260-3800

CelticInsurance@comcast.net



410-546-1557

Fax: 443-665-4152

frank@hvacservicesunlimited.com

HVAC SERVICES UNLIMITED, INC.

Heating & Air Conditioning
Installation and Service

FRANK TOBAT
President

PATRICK TOBAT
Vice President

P.O. Box 70
Nanticoke, MD 21840
www.hvacservicesunlimited.com



The Bank Of Delmarva

Your Bank For Life!

Ten Convenient Locations

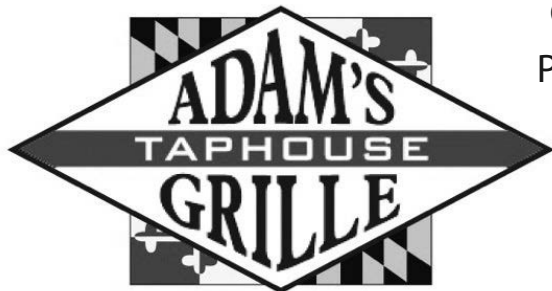
Delmar - Salisbury (4) - Laurel - Seaford
Dagsboro - Ocean City - Rehoboth Beach

Customer Service



410-548-7892 • 800-787-4542

www.bankofdelmarva.com



Casual Family Dining
Private Banquet Room

Full Bar

Catering

Carryout with
Online Ordering

Weekly Specials:

Monday - \$2.00 Tacos & \$3.00 Margaritas

Tuesday - \$6.99 Appetizer Night / Kids PM

Wednesday - \$10.99 Rib Night

Thursday - \$10.99 Steak Night

219 N. Fruitland Blvd. • Fruitland, MD 21826

410-749-6961

www.adamsribsfruitland.com

Come Home and be Worlds Apart...

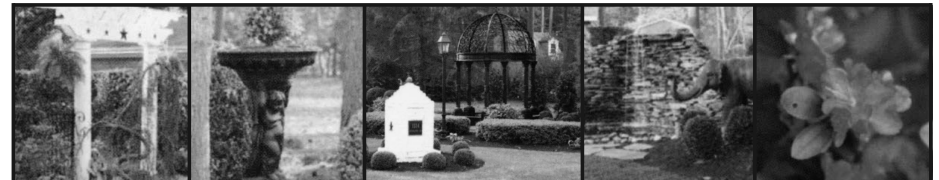


 **Yard
Designs, Inc.**

Bryan LeCompte

410-742-8003

Email b.lecompte@comcast.net





HOLLOWAY FUNERAL HOME

Professional Association

*Serving the Lower Delmarva Peninsula
Since 1883*

5th Generation Family Business
Funeral & Cremation Services
Advance Planning • Monuments • Pet Services

410-742-5141 • www.HollowayFH.com



TRIGLIA

Transportation Co., Inc.

P.O. Box 218, Delmar, DE 19940

AFFILIATED WITH PRIME CARRIERS



302-846-2141

FAX 302-846-3785

1-800-648-8744

